

OUR NETWORK

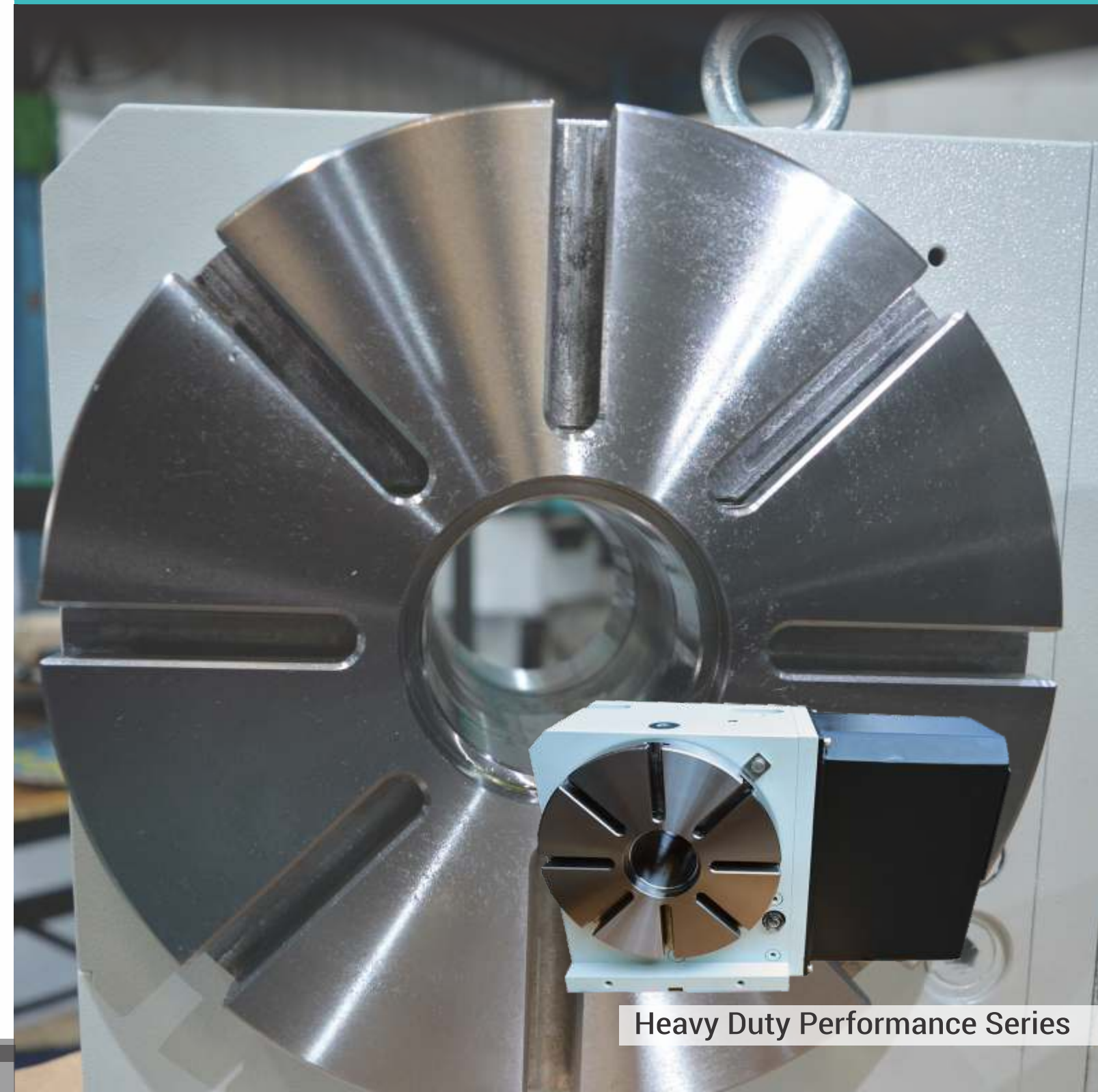


OUR RANGE

- CNC ROTARY TABLES
- CNC TILTING ROTARY TABLES
- HIGH PERFORMANCE HYDRAULIC TURRETS
- COMPACT HYDRAULIC TURRETS
- SERVO TURRETS
- INDEXERS
- AUTOMATIC TOOL CHANGERS

PRECISION through ENGINEERING EXCELLENCE

CNC ROTARY TABLES



Heavy Duty Performance Series



Committed to offer the highest quality products, through the experience, dedication, and innovation.

ABOUT NEXCO

NEXCO is a machine tool accessories marketing company, engaged in products like CNC Rotary tables, Hydraulic turrets, and Automatic tool Changers.

NEXCO is committed to offer the highest quality products, through the experience, dedication, and innovation from our joint venture partners.

Our mission is to understand and support our customer's requirements with a technologically superior, wide range of products, which can deliver optimum performance. Keeping the customer in focus the products are designed for easy integration with all machine tools.

NEXCO Products exhibit strict quality control at all stages of the manufacturing process. All components are manufactured in-house to ensure the highest possible quality of the finished product. With an efficient production facility for manufacturing CNC Rotary tables, Hydraulic turrets and Automatic tool changers, we can deliver the product with small lead time. This is one of the reasons why NEXCO has emerged out as the selected partner in recent times of major machine tool builders, at home.

VISION & MISSION

To be the 'Partner in Progress' of customers by supplying wide range of quality machine tool accessories. To sustain this partnership we shall focus on customer satisfaction, continual improvement in all process and product by having constructive dialogue with customers and deploying state of the art technology to provide world class products.

PRODUCTS & SUPPORT

NEXCO offers you a complete range of cost-effective customer support solution in terms of technical support for installation and commissioning of accessories, selection of suitable accessory based on customer application, training your technical staff about our product, solving technical problems or helping them to maintain health and performance of our products at your ends. You can count upon our service team which is spread across 10 major cities of India.

PROVEN PERFORMANCE RELIABILITY AND ACCURACY



Materials

Worm shaft: Case hardened alloy steel
Worm wheel: Special high tensile brass alloy equal to strength of a steel alloy

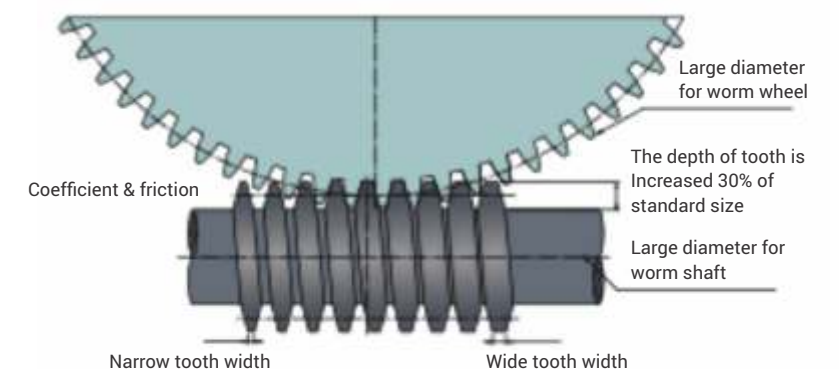
Efficiency of transmission torque

The combination of worm shaft and worm wheel makes the alloy steel smaller and torque of the motor is more efficiently transmitted.

Tooth profile

Full depth gear tooth is used to have the equal strength of one size larger gear.

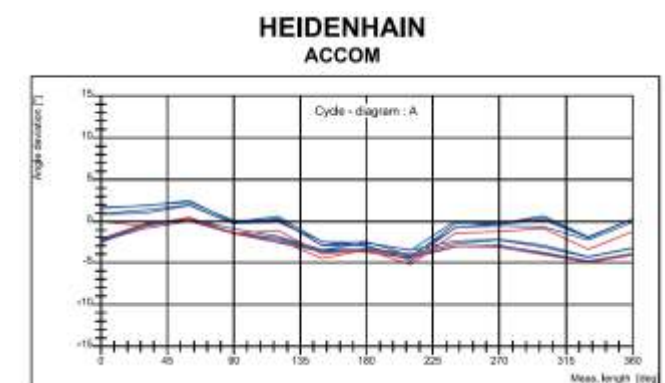
The Matching Schema of Dual Lead worm Wheel and Worm Shaft



Surface contact between worm wheel and worm shaft can be reached 35% ~ 45% suitable for heavy cutting and continuous processing

Indexing Accuracy Class for CNC Rotary Table

Indexing Accuracy – 15 arc second
Repeatability – 4 arc sec.
Measurement as per ISO 230-2 standards.



New Features

CNC ROTARY TABLES



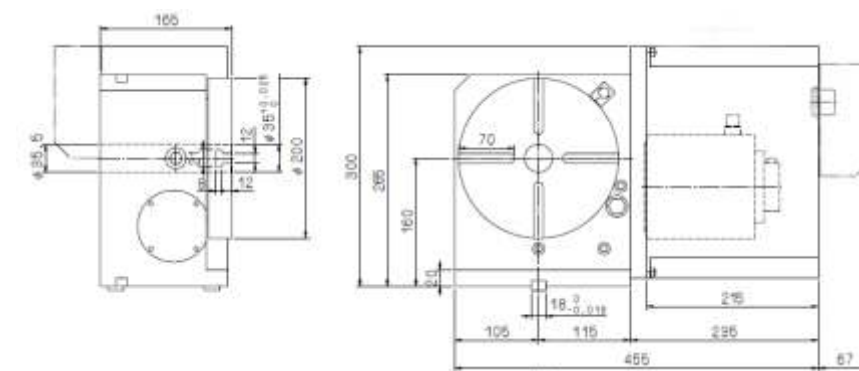
Specifications	CNC-200R	CNC-250R
Table Dia (mm)	200	250
Center Height in Vertical (mm)	160	185
Table height in Horizontal(mm)	165	200
Overall height in vertical(mm)	265	315
Through hole dia(mm)	35H7	70H7
Width of T-slots (mm)	12H7	12H7
width of Guide Block (mm)	18H7	18H7
Servo motor rating KW (Nm)	1 (4)	1.5 (8)
Gear ratio	1::90	1::90
Min. increment degree	0.001	0.001
Max RPM(motor-2000 rpm)	22.2	22.2
Pneu. Clamping force(kg.m)@5kg/cm ²	25	47
Hyd. Clamping force(kg.m)@20kg/cm ²	50	94
Position Accuracy (Arc sec)	20	15
Repeatability (Arc sec)	Unidirectional	4
	Bidirectional	8
Max. mahining force (Kg.m)	23	45
Net weight w/o motor(Kgs)	84	124

Max. Load	Vertical	W= 100 kg	W= 125 kg
	Horizontal	W= 200 kg	W= 300 kg
Max. Radial Load		W= 822 kg	W= 1208 kg
		FxL = 13 kg*m	FxL = 18.2 kg*m
		FxL = 50 kg*m	FxL = 72 kg*m

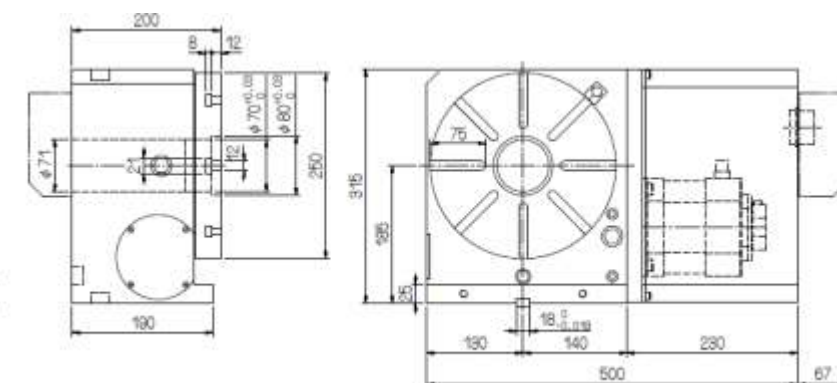
Salient features

- A combination of high precision bronze/nickel worm wheel and case hardened steel worm screw ensures long term position accuracy.
- Dual lead worm wheel/worm shaft facilitate easy backlash adjustment
- Double bearing design allow to withstand higher cutting force
- One piece faceplate and spindle design serves a rigid construction
- Large through hole option on large diameter table allow large workpiece holding passing through spindle through hole

CNC-200R



CNC-250R



Accuracy Standards					
ITEM	Table top flatness	Parallelism of table top and frame bottom	Runout of table spindle center	Perpendicularity of table top of frame bottom	Table top runout
MODEL					
CNC-200R	0.01	0.01	0.01	0.01	0.01
CNC-250R	0.01	0.01	0.01	0.01	0.01

New Features

CNC ROTARY TABLES



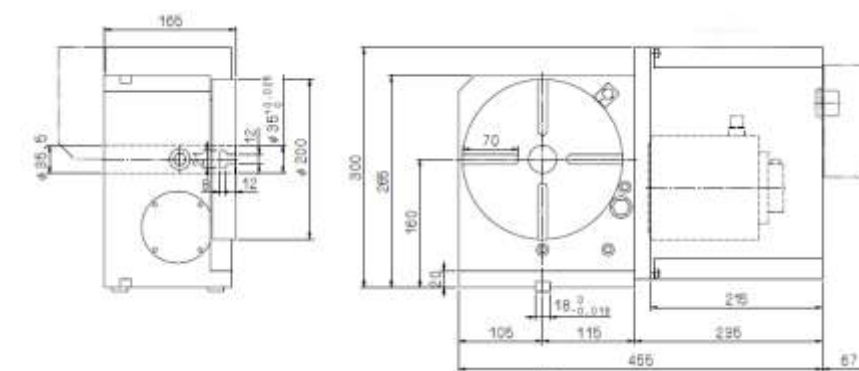
Specifications	CNC-320R	CNC-400R
Table Dia (mm)	320	400
Center Height in Vertical (mm)	210	250
Table height in Horizontal (mm)	240	250
Overall height in vertical (mm)	380	460
Through hole dia (mm)	110H7	150H7
Width of T-slots (mm)	14H7	14H7
width of Guide Block (mm)	18H7	18H7
Servo motor rating KW (Nm)	2 (12)	2 (12)
Gear ratio	1:90	1:90
Min. increment degree	0.001	0.001
Max RPM (motor-2000 rpm)	22.2	22.2
Pneu. Clamping force (kg.m)@5kg/cm ²	71	92
Hyd. Clamping force (kg.m)@20kg/cm ²	142	184
Position Accuracy (Arc sec)	15	15
Repeatability (Arc sec)	Unidirectional	4
	Bidirectional	8
Max. machining force (Kg.m)	23	45
Net weight w/o motor (Kgs)	84	124

Max. Load	Vertical	W = 100 kg	W = 125 kg
	Horizontal	W = 200 kg	W = 300 kg
Max. Radial Load		W = 822 kg	W = 1208 kg
		FxL = 13 kg*m	FxL = 18.2 kg*m
		FxL = 50 kg*m	FxL = 72 kg*m

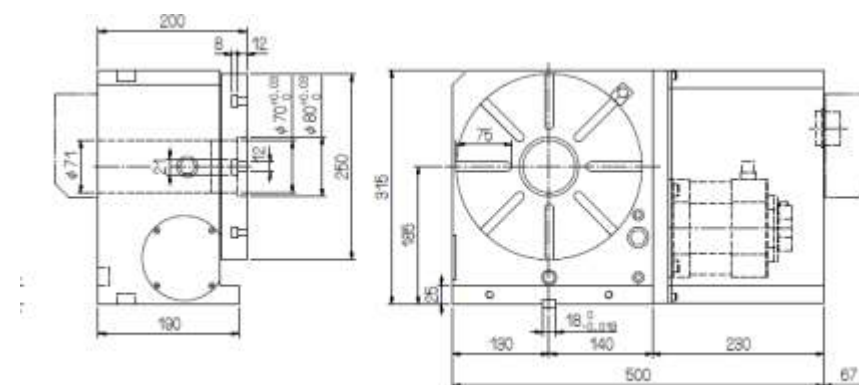
Salient features

- A combination of high precision bronze/nickel worm wheel and case hardened steel worm screw ensures long term position accuracy.
- Dual lead worm wheel/worm shaft facilitate easy backlash adjustment
- Double bearing design allow to withstand higher cutting force
- One piece faceplate and spindle design serves a rigid construction
- Large through hole option on large diameter table allow large workpiece holding passing through spindle through hole through spindle through hole

CNC-320R



CNC-400R



New Features

TILTING ROTARY TABLES



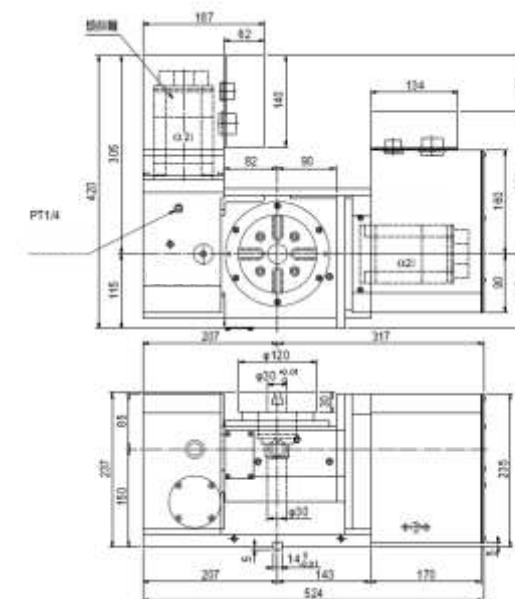
Specifications	CNCT-100	CNCT-200R	CNCT-250	CNCT-320
Table Dia (mm)	120	200	250	320
Center Height in Vertical (mm)	150	195	225	255
Table height in Horizontal(mm)	235	360	355	425
Overall height in vertical(mm)	30H7	35H7	70H7	110H7
Through hole dia(mm)	10H7	12H7	12H7	14H7
Width of T-slots (mm)	14H7	18H7	18H7	18H7
width of Guide Block (mm)	Rotating Tilting	Rotating Tilting	Rotating Tilting	Rotating Tilting
Servo motor rating KW (Nm)	0.5 (2)	0.5 (2)	1.0 (4)	1.5 (8)
Gear ratio	1:72	1:120	1:90	1:180
Min. increment degree	0.001	0.001	0.001	0.001
Max RPM(motor-2000 rpm)	27.8	16.7	22.2	11.1
Pneu. Clamping force(kg.m)@5kg/cm2	-20 to 120	-110 to 110	-110 to 110	-110 to 110
Hyd. Clamping force(kg.m)@20kg/cm2	12	12	25	50
Position Accuracy (Arc sec)	24	24	50	100
Repeatability (Arc sec)	Unidirectional Bidirectional	60 4	20 4	15 4
Max. mahining force (Kg.m)	8	8	8	8
Net weight w/o motor(Kgs)	105	240	280	450

Max. Load	Vertical	W=25 kg	W=50 kg	W=60 kg	W=100 kg
	Horizontal	W=35 kg	W=100 kg	W=100 kg	W=200 kg
		F= 400Kg	F= 500Kg	F= 1200 kg	F= 1500Kg
Max. Radial Load		FxL=24 kg.m	FxL=50 kg.m	FxL=100 kg.m	FxL=142 kg.m
		FxL=30 kg.m	FxL=102 kg.m	FxL=120 kg.m	FxL=200 kg.m

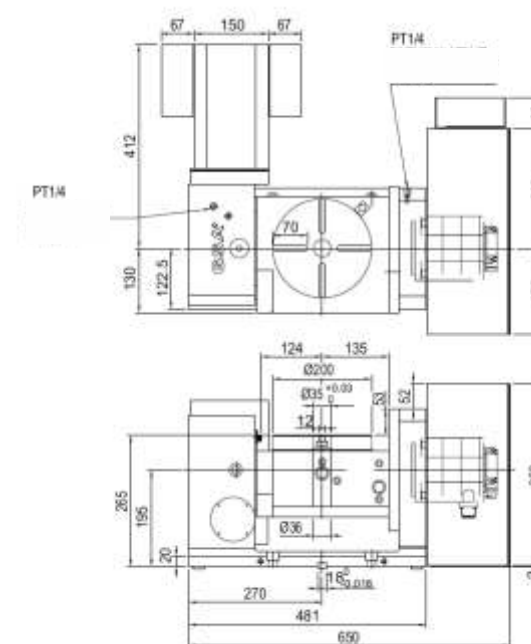
Salient features

- A combination of high precision bronze/nickel worm wheel and case hardened steel worm screw ensures long term position accuracy.
- Dual lead worm wheel/worm shaft facilitate easy back lash adjustment
- Double bearing design allow to withstand higher cutting force
- One piece faceplate and spindle design serves a rigid construction
- Large through hole option on large diameter table allow large workpiece holding passing through spindle through holeg through spindle through hole

CNCT-100



CNCT-200R



CNCT-250

